

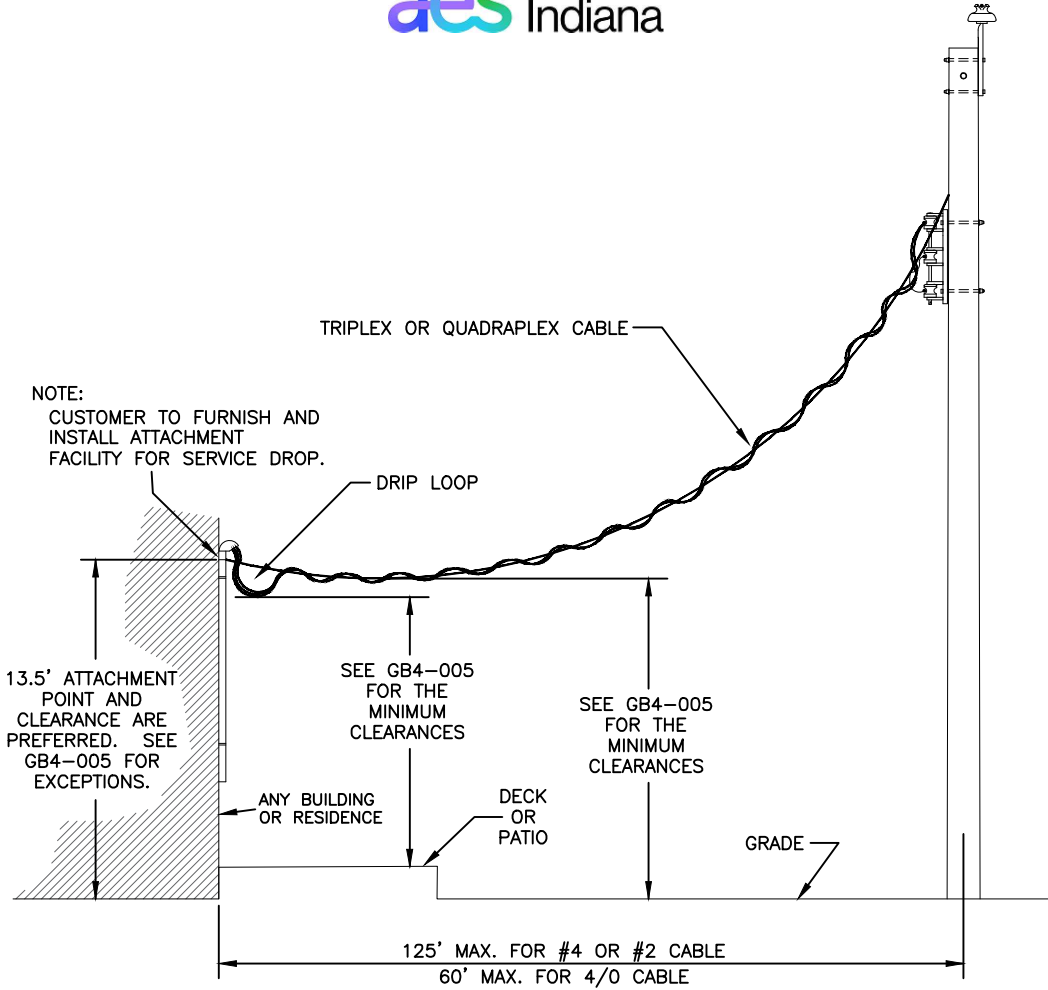
**MINIMUM CLEARANCES FOR TRIPLEX AND DUPLEX
SERVICE CONDUCTORS**

SURFACE CROSSED BY SERVICE DROP	REQUIRED CLEARANCE FOR 150V PHASE TO GROUND AND BELOW	REQUIRED CLEARANCE FOR 150V TO 300V PHASE TO GROUND
SUBJECT TO PEDESTRIANS OR RESTRICTED TRAFFIC ONLY. INCLUDES LAWN AREAS, DECKS, PLATFORMS, SIDEWALKS AND SIMILAR AREAS.	12 FEET (SEE NOTE #2)	12 FEET (SEE NOTE #3)
RESIDENTIAL DRIVEWAYS AND RESIDENTIAL PARKING AREAS NOT SUBJECT TO VEHICLES THAT ARE 8 FEET OR MORE IN HEIGHT.	12 FEET	12.5 FEET
ROADS, STREETS, ALLEYS, AND OTHER AREAS SUBJECT TO TRUCK TRAFFIC (SEE NOTE #8), COMMERCIAL DRIVEWAYS, PARKING LOTS. OTHER AREAS TRAVERSED BY VEHICLES, SUCH AS CULTIVATED, GRAZING, FOREST, AND ORCHARD LANDS, INDUSTRIAL SITES, COMMERCIAL SITES, ETC.	16 FEET	16 FEET
SWIMMING POOLS, DECKS AROUND POOLS, RAILROAD TRACKS, AND SERVICES LARGER THAN 400 AMPERES OR GREATER THAN 300V PHASE TO GROUND.	(SEE NOTE 6)	(SEE NOTE 6)

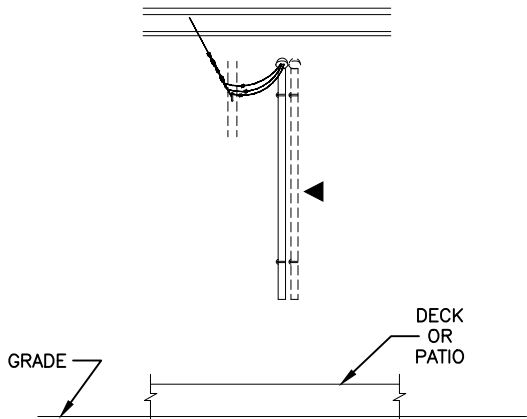
NOTES:

1. ALL CLEARANCES ARE BASED ON THE REQUIREMENTS FOR STANDARD TRIPLEX AND QUADRAPLEX CABLES AND MEET OR EXCEED THE NATIONAL ELECTRICAL SAFETY CODE.
2. THIS CLEARANCE MAY BE REDUCED TO 10 FEET FOR SERVICE DROPS TO RESIDENTIAL BUILDINGS ONLY.
3. THIS CLEARANCE MAY BE REDUCED TO 10.5 FEET FOR SERVICE DROPS TO RESIDENTIAL BUILDINGS ONLY.
4. WHERE COMMUNICATIONS CONDUCTORS (TELEPHONE, CABLE TV, ETC.) ARE LOCATED, MID-SPAN CLEARANCE OF 18" SHALL BE MAINTAINED TO THE SERVICE DROP CONDUCTORS.
5. ONLY POWER SERVICE-DROP CONDUCTORS SHALL BE PERMITTED TO BE ATTACHED TO A SERVICE MAST. SEE THE INDIANA ELECTRICAL CODE, SECTION 230.28.
6. CROSSING THIS AREA REQUIRES THE ASSISTANCE OF A PROJECT DESIGNER. SEE THE CUSTOMER PROJECTS ENGINEERING DISTRICT MAP, GBO-100 FOR THE NAME AND CONTACT INFORMATION.
7. SEE SECTIONS 115, 120, 125, AND 565 FOR ADDITIONAL INFORMATION.
8. TRUCK TRAFFIC IS BASED ON ANY VEHICLE OVER 8 FEET IN HEIGHT.

**OVERHEAD SERVICE DROP
CLEARANCE UP TO
400 AMPERES**



SIDE VIEW

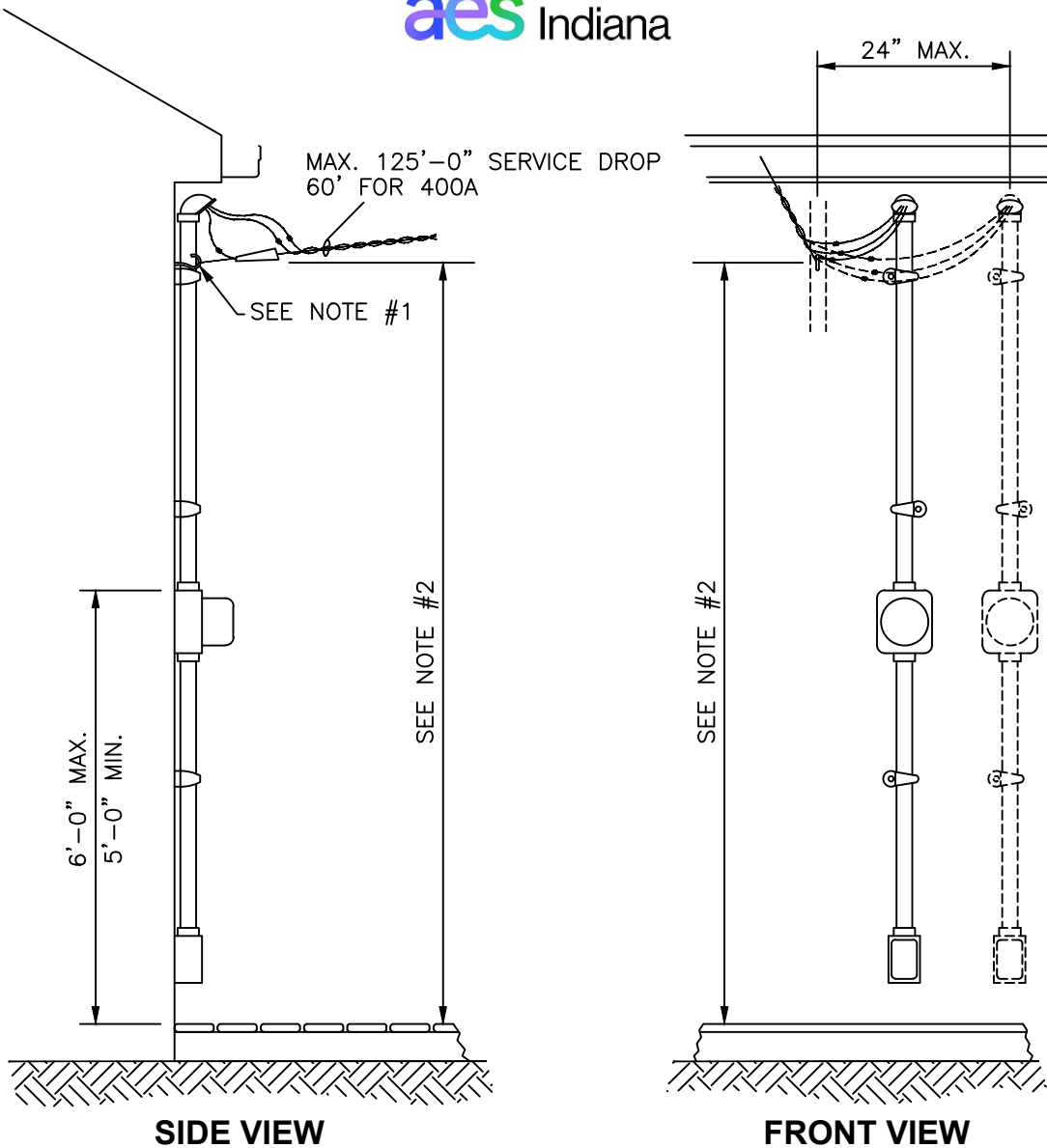


FRONT VIEW

NOTES:

- ▶ 1. WHERE MORE THAN ONE SERVICE RISER IS INSTALLED, THE SERVICE HEADS SHALL BE NO FURTHER FROM THE SERVICE DROP THAN 24 INCHES WITH SUFFICIENT SERVICE ENTRANCE CONDUCTORS TO REACH THE SERVICE DROP.

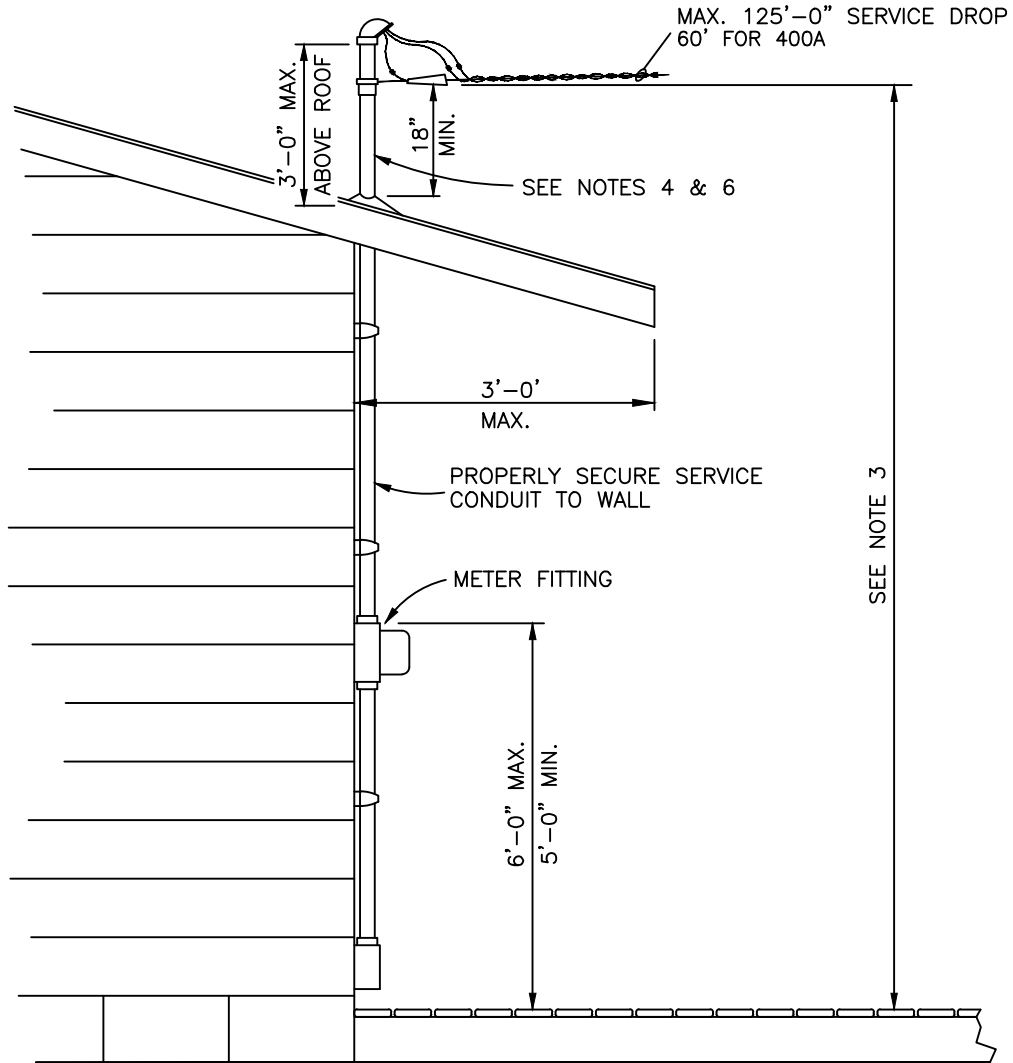
QUADRAPLEX OR TRIPLEX SERVICE



NOTES:

1. CONTRACTOR TO FURNISH AND INSTALL A MINIMUM SIZE 3/8" GALVANIZED LAG SCREW EYE OR EYE BOLT FOR ATTACHMENT OF SERVICE DROP.
2. 10'-0" MINIMUM ABOVE DECK, PATIO, GRADE, OR OTHER AREAS OF PEDESTRIAN TRAFFIC TO THE ATTACHMENT POINT. (SEE ALSO GB4-007)
3. THE SERVICE DROP SHALL NOT MAKE A SMALLER ANGLE THAN 30° WITH THE SIDE OF THE BUILDING.
4. FOR VERTICAL CLEARANCES, SEE DRAWING GB4-005.
- ▶ 5. WHERE MORE THAN ONE SERVICE RISER IS INSTALLED, THE SERVICE HEADS SHALL BE NO FURTHER FROM THE SERVICE DROP THAN 24 INCHES WITH SUFFICIENT SERVICE ENTRANCE CONDUCTORS TO REACH THE SERVICE DROP.

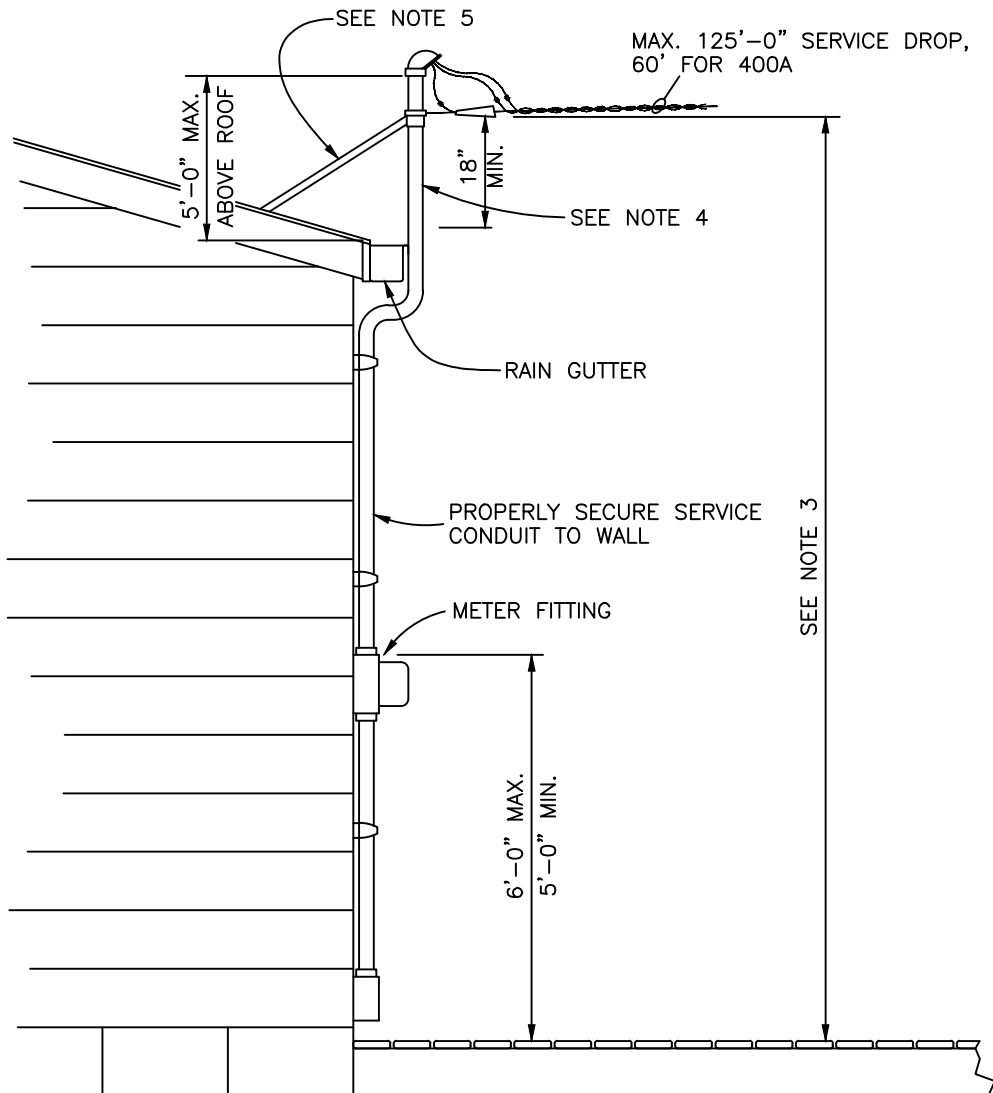
**SERVICE
CONNECTION BELOW ROOF
400 A MAXIMUM SERVICE**



NOTES:

1. SERVICE HEAD SHALL BE LOCATED SO CONNECTION CAN BE MADE FROM A LADDER WITHOUT CLIMBING ON ROOF.
2. NO COUPLINGS OR FITTINGS SHALL BE INSTALLED WITHIN 6'-0" OF SERVICE HEAD.
3. 10'-0" MINIMUM ABOVE DECK, PATIO, GRADE, OR OTHER AREAS OF PEDESTRIAN TRAFFIC TO THE ATTACHMENT POINT. (SEE ALSO GB4-007)
4. CUSTOMERS SERVICE RISER EXTENDING THROUGH ROOF FOR SUPPORT OF SERVICE DROP SHALL BE A MINIMUM OF 2" RIGID GALVANIZED OR INTERMEDIATE METAL CONDUIT.
- ▶ 5. WHERE MORE THAN ONE SERVICE RISER IS INSTALLED, THE SERVICE HEADS SHALL BE NO FURTHER FROM THE SERVICE DROP THAN 24 INCHES WITH SUFFICIENT SERVICE ENTRANCE CONDUCTORS TO REACH THE SERVICE DROP.
- ▶ 6. THE SERVICE DROP SHALL NOT MAKE A SMALLER ANGLE THAN 30° WITH THE SIDE OF THE BUILDING.
- ▶ 7. NOT APPROVED FOR 480V. SERVICES.
- ▶ 8. FOR VERTICAL CLEARANCES, SEE DRAWING GB4-005.

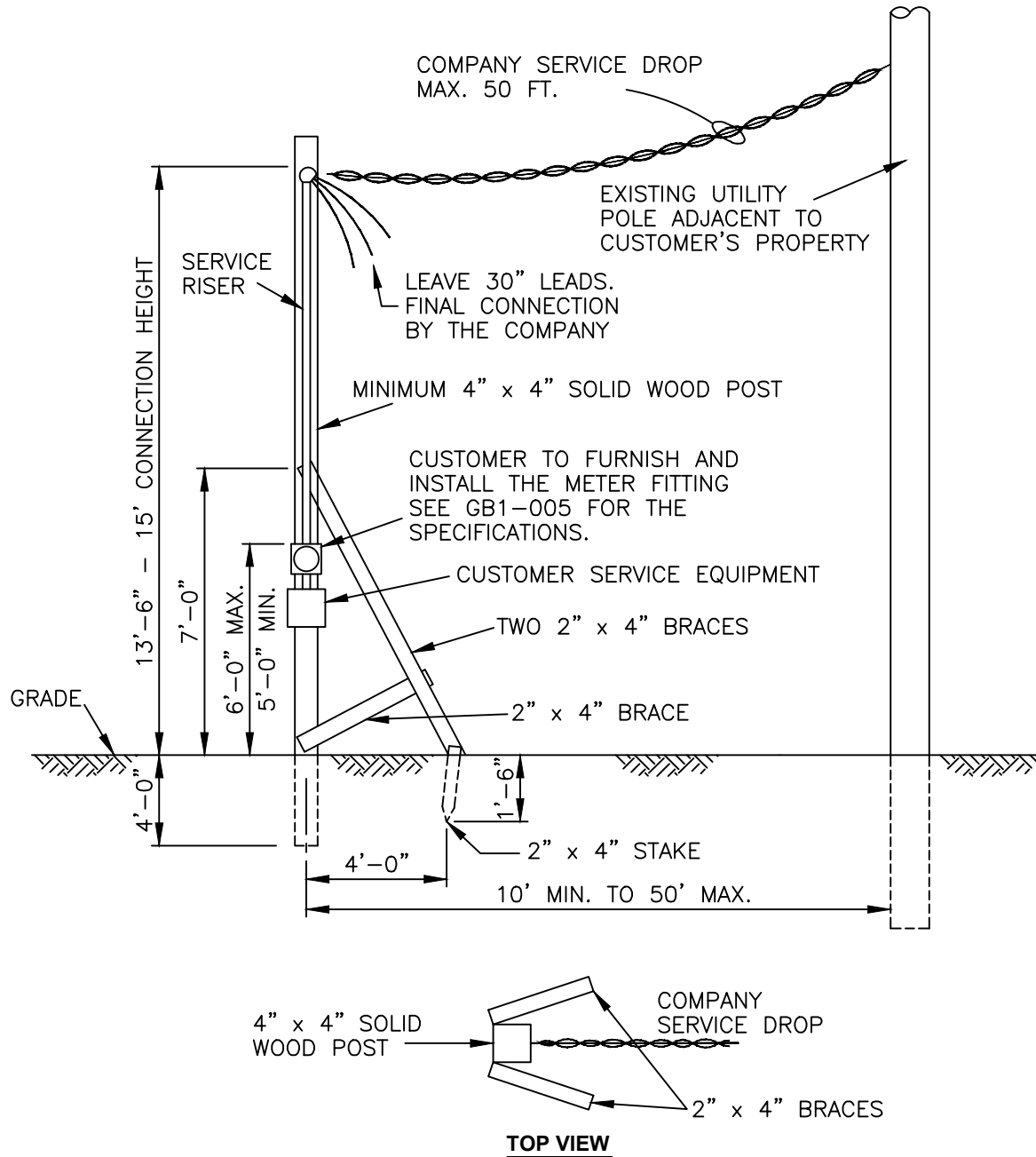
**SERVICE RISER
EXTENDING THROUGH ROOF
400 A MAXIMUM SERVICE**



NOTES:

1. SERVICE HEAD SHALL BE LOCATED SO CONNECTION CAN BE MADE FROM A LADDER WITHOUT CLIMBING ON ROOF.
2. NO COUPLINGS OR FITTINGS SHALL BE INSTALLED WITHIN 6'-0" OF SERVICE HEAD.
3. 10'-0" MINIMUM ABOVE DECK, PATIO, GRADE, OR OTHER AREAS OF PEDESTRIAN TRAFFIC TO THE ATTACHMENT POINT. (SEE ALSO GB4-007)
4. CUSTOMERS SERVICE RISER SHALL BE A MINIMUM OF 2" RIGID GALVANIZED, INTERMEDIATE METAL, OR ALUMINUM CONDUIT (3" FOR 400A).
- ▶ 5. WHERE MORE THAN ONE SERVICE RISER IS INSTALLED, THE SERVICE HEADS SHALL BE NO FURTHER FROM THE SERVICE DROP THAN 24 INCHES WITH SUFFICIENT SERVICE ENTRANCE CONDUCTORS TO REACH THE SERVICE DROP.
- ▶ 6. 2-RIGID SUPPORTS SECURED TO TWO SEPARATE RAFTERS.
- ▶ 7. THE SERVICE DROP SHALL NOT MAKE A SMALLER ANGLE THAN 30° WITH THE SIDE OF THE BUILDING.
- ▶ 8. NOT APPROVED FOR 480V. SERVICES.
- ▶ 9. FOR VERTICAL CLEARANCES, SEE DRAWING GB4-005.

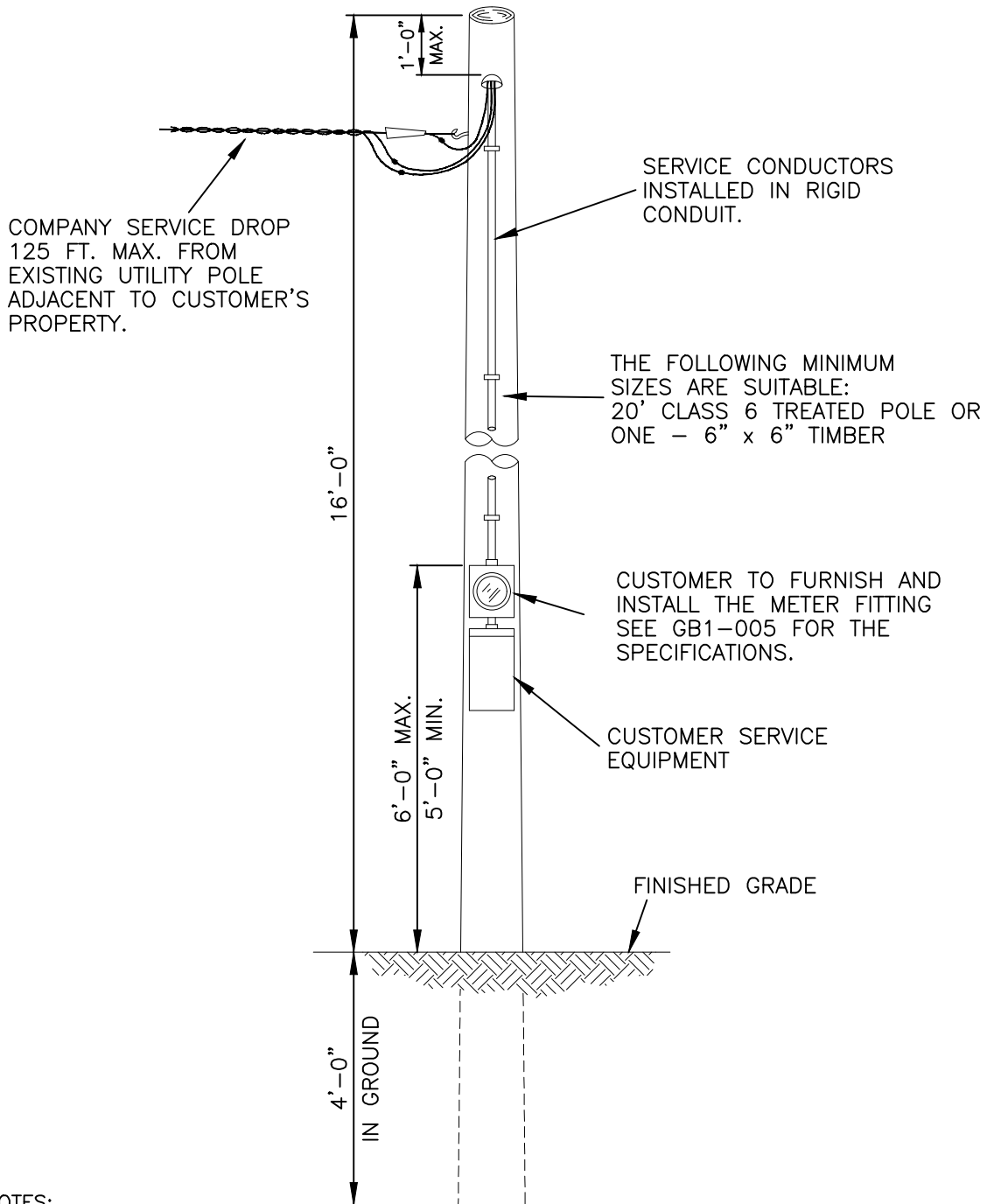
**SERVICE RISER
EXTENDING ABOVE ROOF
400 A MAXIMUM SERVICE**



NOTES:

1. ENTIRE STRUCTURE TO BE CONSTRUCTED AND INSTALLED BY THE CONTRACTOR.
2. THE USE OF THIS STRUCTURE IS NOT PERMITTED IF SERVICE WIRES PASS OVER PUBLIC STREETS, ALLEYS, ROADS, AND DRIVEWAYS.
3. TEMPORARY CONSTRUCTION SERVICE POLE MUST BE A MINIMUM OF 10 FT. FROM THE COMPANY'S POLE AND MUST BE POSITIONED TO ALLOW THE SERVICE DROP TO CLEAR THE COMMUNICATION CABLES BY AT LEAST 40 INCHES.
4. ALTERNATE METHODS MAY BE USED WITH PERMISSION OF SERVICE CONNECTION.
5. FOR DEFINITION OF "TEMPORARY", SEE SECTION 107.
- ▶ 6. FOR VERTICAL CLEARANCES, SEE DRAWING GB4-005.

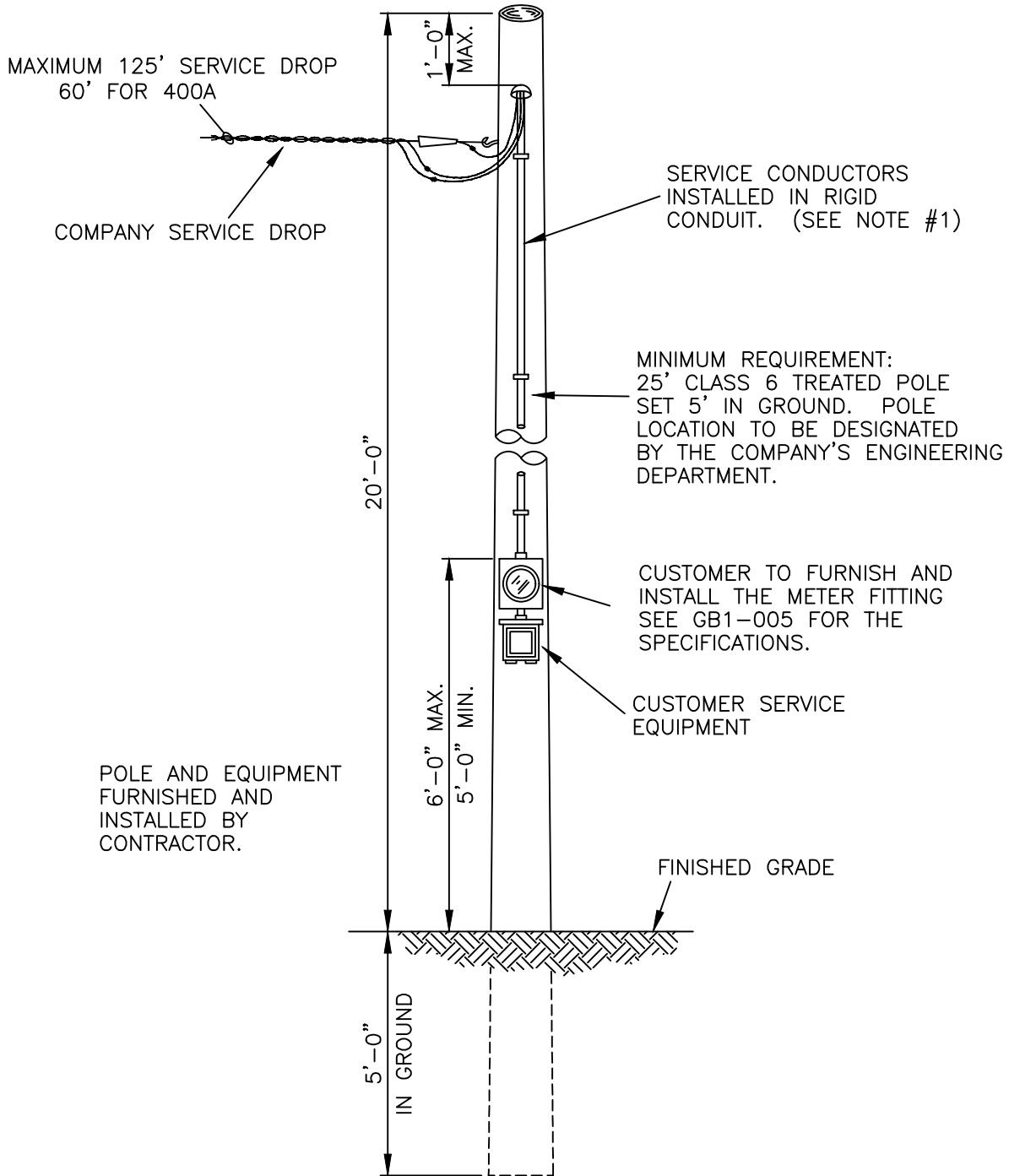
**TEMPORARY OVERHEAD
CONSTRUCTION SERVICE
120/240 VOLT, 1 PHASE, 3 WIRE
225 A MAXIMUM SERVICE**



NOTES:

1. POLE AND EQUIPMENT FURNISHED AND INSTALLED BY CONTRACTOR.
2. TEMPORARY CONSTRUCTION SERVICE POLE MUST BE A MINIMUM OF 10 FT. FROM THE COMPANY POLE AND MUST BE POSITIONED TO ALLOW THE SERVICE DROP TO CLEAR THE COMMUNICATION CABLES BY AT LEAST 40 INCHES.
3. FOR DEFINITION OF "TEMPORARY", SEE SECTION 107.
4. SEE SECTION 220A2d FOR THE DEFINITION OF RIGID CONDUIT.
- ▶ 5. FOR VERTICAL CLEARANCES, SEE DRAWING GB4-005.

**TEMPORARY POLE METER INSTALLATION
FOR CONSTRUCTION
120/240 VOLT, 1 PHASE 3 WIRE
225 A MAXIMUM SERVICE**



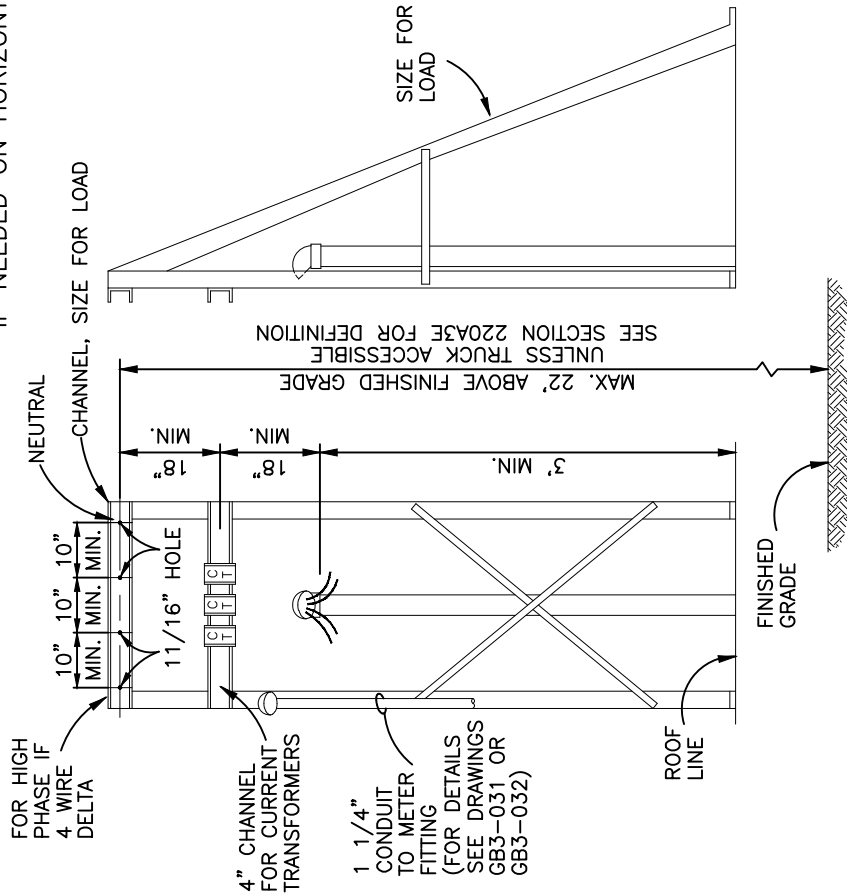
NOTES:

1. SEE SECTION 220A2d FOR THE DEFINITION OF RIGID CONDUIT.
- ▶ 2. FOR VERTICAL CLEARANCES, SEE DRAWING GB4-005.

**PERMANENT POLE METER INSTALLATION
FOR ONE SERVICE
120/240 VOLT, 1 PHASE, 3 WIRE
400 A MAXIMUM SERVICE**

NOTES:

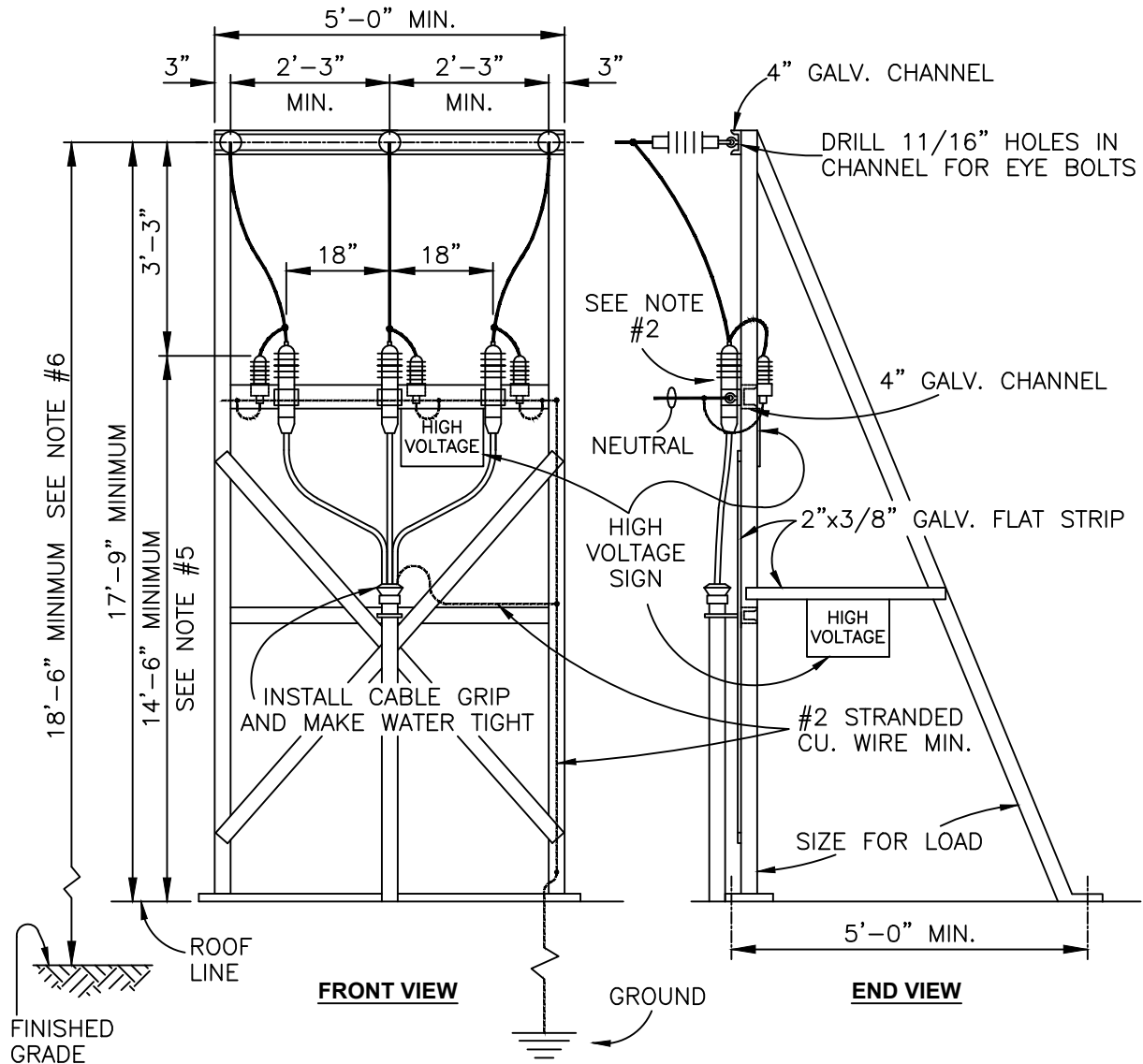
1. THE COMPLETE INSTALLATION SHALL BE SUBJECT TO APPROVAL OF THE COMPANY'S ENGINEERING DEPARTMENT.
2. THE NEUTRAL AND HIGH PHASE MAY BE REVERSED IF NEEDED ON HORIZONTAL INSTALLATIONS ONLY.



HORIZONTAL MOUNTING

VERTICAL MOUNTING

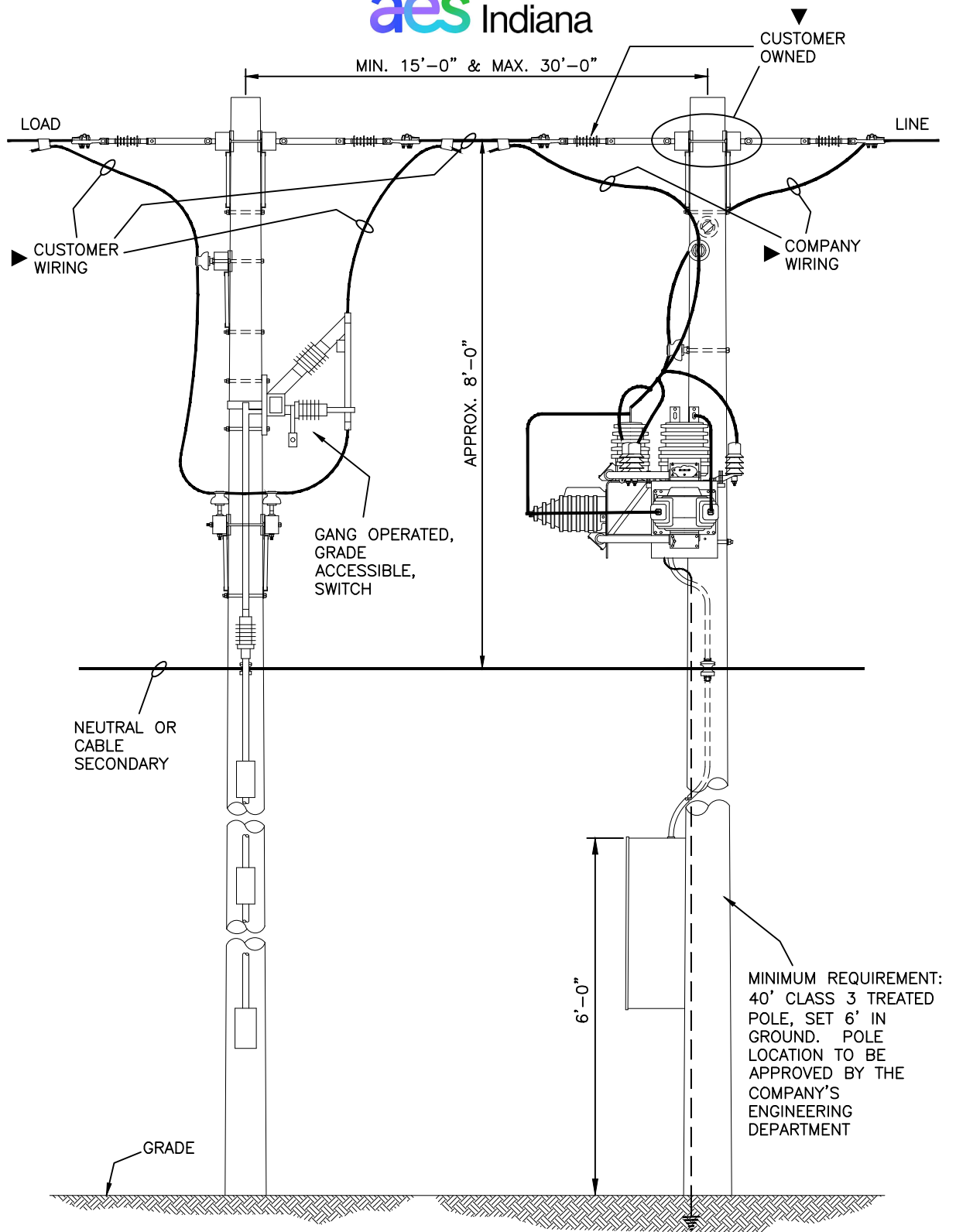
TYPICAL ROOF STRUCTURES FOR SERVICE DROP AND METERING TRANSFORMERS FOR 300 VOLT SERVICES



NOTES:

1. DIMENSIONS FOR SPACING OF PHASES ARE FOR LINES LEAVING STRUCTURES AT 90 . FOR CONTACTS AT OTHER ANGLES, CHANGE SPACING SO MINIMUM OF 18" WILL BE MAINTAINED BETWEEN CONDUCTORS.
2. COMPANY WILL FURNISH ONLY DEAD END CLAMPS, INSULATORS, ARRESTERS AND SIGN.
3. THE COMPLETE INSTALLATION SHALL BE SUBJECT TO APPROVAL BY THE COMPANY'S ENGINEERING DEPARTMENT.
4. SEE SECTION 400 FOR ADDITIONAL INFORMATION.
5. 14'-6" SHALL BE MAINTAINED FROM THE ROOF LINE TO THE LOWEST LIVE PART, DRIP LOOP, JUMPER, OR SERVICE DROP.
6. 18'-6" MINIMUM FROM GRADE TO THE LOW POINT OF THE SAG OVER STREETS, DRIVES AND PARKING LOTS.
7. SHALL BE TRUCK ACCESSIBLE, SEE SECTION 220A3e FOR DEFINITION.

**ROOF STRUCTURE FOR
MAXIMUM 13.2 KV PRIMARY SERVICE
SINGLE CONDUCTOR CABLE**



NOTES:

1. SEE SECTION 400 FOR ADDITIONAL INFORMATION.
- ▶ 2. THE COMPANY WILL FURNISH ONLY THE DEAD END CLAMPS, INSULATORS, METERING EQUIPMENT AND METER WIRING.
3. THE POLES AND CUSTOMER EQUIPMENT SHALL BE INSTALLED AND MAINTAINED BY THE CUSTOMER.
4. THE COMPLETE INSTALLATION SHALL BE SUBJECT TO APPROVAL OF THE COMPANY'S ENGINEERING DEPARTMENT.
5. THE PRIMARY METER INSTALLATION SHALL BE TRUCK ACCESSIBLE, SEE SECTION 220A3e FOR THE DEFINITION.
6. THE SERVICE DISCONNECTING MEANS AND POLE WILL NOT BE REQUIRED IF A STANDARD CONTRACT RIDER NUMBER 4 IS UTILIZED.

**PRIMARY METER AND SERVICE
DISCONNECTING MEANS**